

13:37 -

II.

LAS DIMENSIONES.

(13) y (14) NO PERTENECEN

al universo sino solo

a Dios existen

pero nada las vemos.

Solo en el centro del
universo en Dios

existen incluso la

matemática y las leyes

pero no podemos tocarlas

ni verlas solo

intuirlas.

13:37. - 27-3-2006

II.

LAS DIMENSIONES.

(B) y (Z) NO PERTENECEN

al universo sino solo

a Dios existen

pero nada las vemos.

Solo en el centro del

universo en Dios

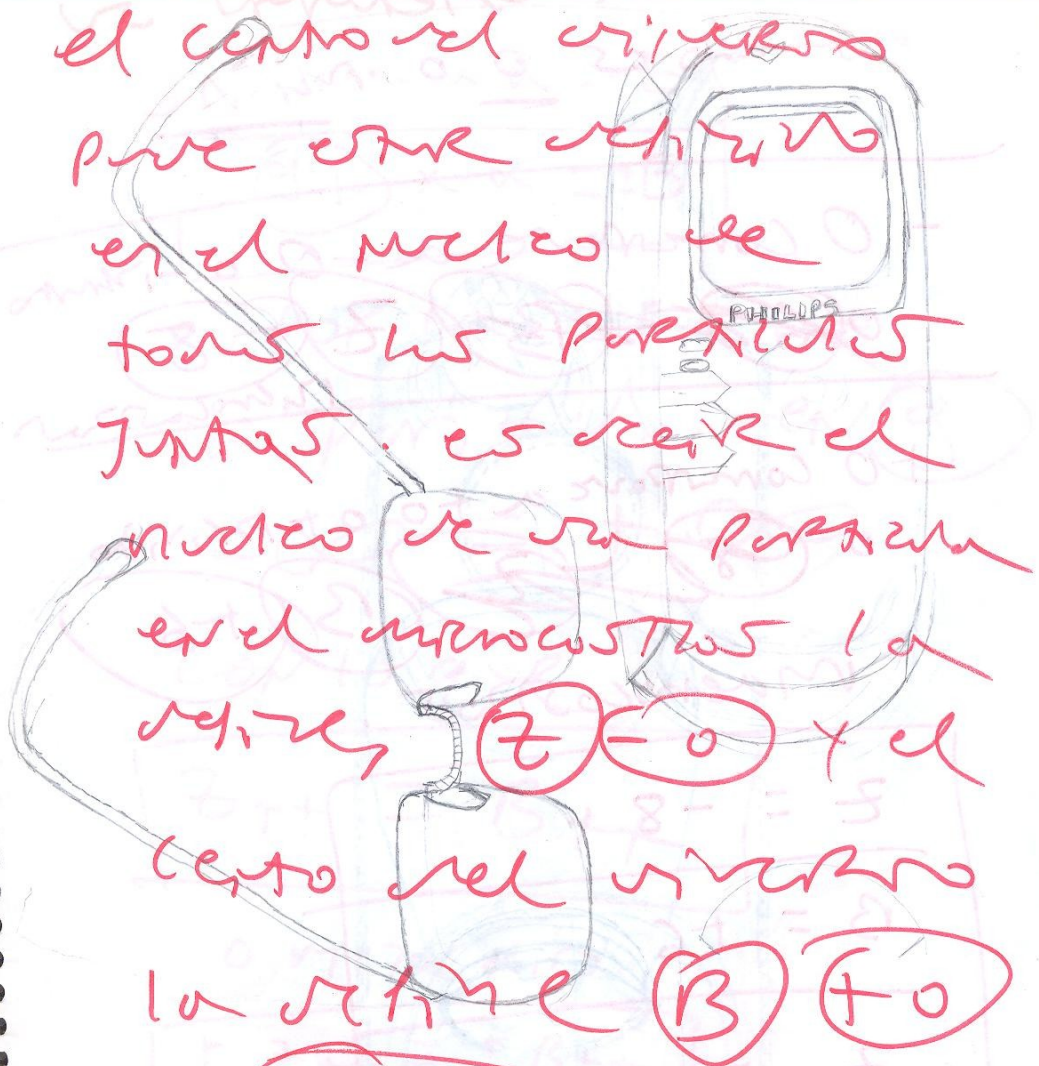
existen incluso la

maternidad y las tiene

pero no podemos tocarlas

ni verlas solo

el centro del universo
 para estar centrado
 en el núcleo de
 todas las partículas
 juntas. es decir el
 núcleo de una partícula
 en el macrocosmos la
 define $(Z=0)$ y el
 centro del universo
 la define $(B=0)$
 el $(+infinito)$ una posición
 el macrocosmos $(B=0)$
 y otra el microcosmos.
 $(Z=0) - infinita.$



no time extension in
when 5 0 0 into

- 0 converge a - 0 0 - into
~~0 6~~ ~~13~~ ~~7~~ ~~-8~~
 macrocosmos

+ 0 converge a + 0 0 + into
 0 ~~-8~~ ~~7~~ ~~13~~ ~~+6~~

macrocosmos

$z = -8$
$B = +6$
$z_{++} = -\infty$
$B_{++} = +\infty$

$$B \cap \alpha = -z$$

$$g + \alpha = \pm B$$

y por la ley de la periodicidad en g
 $-\infty = +\infty$

con lo que

$$z_{++} = B_{++}$$

o mejor dicho

$$\pm z_{++} = \pm B_{++}$$

con lo que quedan
 ramas B y z a
 3 dimensiones primarias,
 en g (B) (z) y (∞)

entonces quedaban
 en 13 dimensiones,
 para tener la escala
 a 205, como las
 13 notas de un acorde
 del Do al Si

siendo 0

$$Z_{++} = B_{++} = \infty$$

$$= \text{infinito.}$$

LA DEFINICIÓN DE DIOS

$$0 \text{ } 0714 \leq$$

$$| -\infty = +\infty = \infty$$

que es lo mismo que
 $\text{dejar } \sqrt{+0 = -0 = 0}$

$$\begin{cases} -8 = +6 = \infty \\ 8+6 = 14 \\ 14 = \infty \end{cases}$$

$$\begin{cases} -8 = -6 = 0 \\ \pm 8 \pm 6 = \pm 2 \end{cases}$$

$$\begin{cases} x = \infty \\ z = 0 \end{cases}$$

$$z = -\infty$$

CON LOGO

$$z \pm z = 2$$

$$z \pm z = 14$$

14 mismo

14 mismo

es decir ∞ tomar valor
 de z en 14 y
 de 14 en ∞

$$\text{cur } | + 0 = - 0 = 0$$

$$0 \left\{ \begin{array}{l} -8 = +6 = \infty \\ 8+6 = 14 \\ |14 = \infty \end{array} \right.$$

$$\left\{ \begin{array}{l} -8 = -6 = 0 \\ | \pm 8 \pm 6 = \pm 2 \end{array} \right.$$

$$\left\{ \begin{array}{l} \alpha = \infty \\ z = 0 \end{array} \right.$$

$$|z = -\infty$$

con log v

$$z + z = 2$$

$$z + z = 14$$

microcosmos

macrocosmos

es decir ∞ todo un vno

de 2 en microcosmos y

de 14 en macrocosmos.

Handwritten notes on a piece of paper:

- At the top, the text "Dior Christian Dior" is written in red ink, with "Dior" appearing twice.
- Below this, the name "Christian" is written in red ink.
- Further down, the name "Christian" is written again in red ink.
- At the bottom, the name "Christian" is written in red ink.

Answer

14

con lo que

$$Z++ \text{ y } B++ = \infty$$

el BIT 13 y 14

se quedan reservados al

valor 13 como valor 12

$$14 - 2 = 14 - 13$$

con lo que quedamos 13
números.

$$13 \Rightarrow \infty \Rightarrow 12$$

el número actual 14

solo puede tener valor

de 0 o 1 es la paridad
de cada

BINARIO RECURSO		valor	
11	neg. (7)	-8	= -8
12	posit. (13)	+6	= +6
13	Extr. (∞) (Z++)	12	= $\pm \infty$
14	PARIDAD. BINARIO (B++)	cero 0 1	<div> <div>= X+</div> <div>= X</div> <div>= P+</div> </div> <div> <div>= Better</div> <div>= ++</div> </div>

el numero ^{BINARIO RECURSO} 14 define la paridad.

$$B + Z++ = P++$$

$$\left\{ \begin{array}{l} Z + P_i = -7 \\ P_i = B + \infty = 3'141516 \cdot 9 = -Z = -7 \end{array} \right. \quad | \quad Z = B + \infty$$

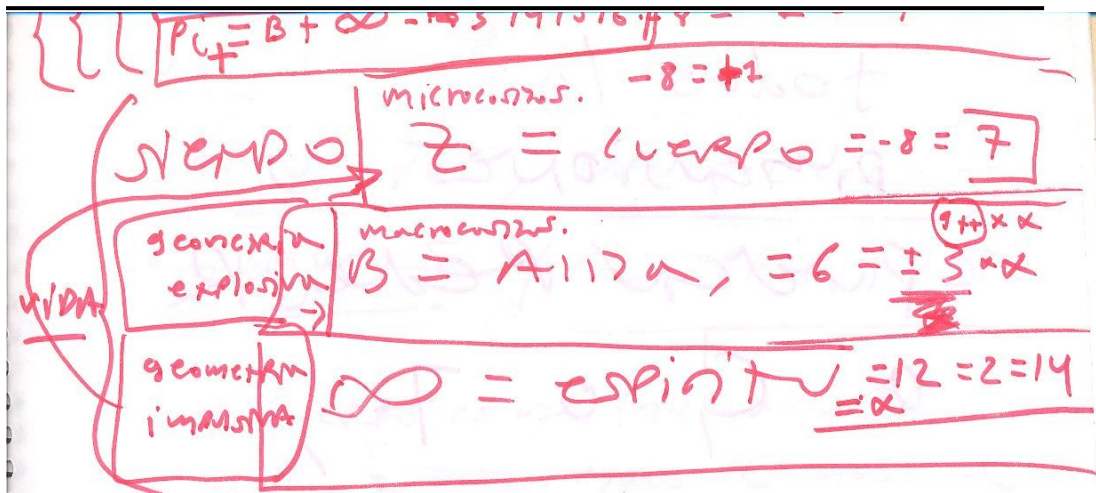
Step 0 $\xrightarrow{\text{microcosmos. } -8 = \phi^2}$ $Z = \text{cuerpo} = -8 = 7$

vida \rightarrow $\begin{array}{l} \text{geometría} \\ \text{explosión} \end{array} \xrightarrow{\text{macrocosmos.}} \beta = A117\alpha, = 6 = \pm 5\alpha$

$\begin{array}{l} \text{geometría} \\ \text{inmensa} \end{array} \rightarrow \infty = \text{espíritu} = 12 = 2 = 14 = \alpha$

Boulma esta impregnado
por Dios al nacer,
el cuerpo es nuestro y
el espíritu es de todos,
 $\infty = \text{espíritu}$.

C	- luz	- cuerpo	- cuerpo humano.
g	- masa	- Dios	- universo
x	- espacio	- cuerpo humano.	1117Bc
Pi	- Parámetro	- velocidad	- centro del universo
Betta	- eternidad	- fin	- fin del mundo.



Boulma es tu impregnación
por Dios al nacer,
el cuerpo es nuestro y
el espíritu es de todos,
 $\infty = \text{espíritu}$.

C	- luz	- cuerpo - tiempo universo.
g	- masa	- Dios - materia
α	- espacio	- campo nervio. Hertz distancia al centro universo o velocidad de la luz
P_i	- Partícula	- círculo - casa de Dios - centro del universo.
Betta	- eternidad	- tiempo de Dios - definición del universo.
$\alpha = Z^2 + B^2 + \infty$		

todas las
dimensiones se
pueden reducir
a C_1 o 7 ,

Y el cuarto Z se
reduce a 7 cuerdas,
es decir a C_1 ,
el universo se reduce
a 7 universos o veras
Y todo se reduce a 7
a C_1 que es constante
en todo el universo
en el espacio pero no en la
- intensidad

ni era el cuerpo ni el alma ni el espíritu

con 10 cables. tercetos

7 cuerpos, con 7 caracteres,

6 almas y 12 espíritus.

el cuerpo es el individuo el

alma es un regulo de Dios al

nacer ^{en el momento que nace.} y los 12 espíritus son un

regulo de Cristo. de la luz. y

el cuerpo modifica con g pero no con x

g es constante en

el espacio solo

x modifica su lectura

en g con la materia de

los instrumentos de la

medicina por lo que

constante en el espacio

en x pero no en las demás

con 10 cables. 7 cuerpos
7 cuerpos, con 7 cuerpos,
6 almas y 12 espíritus.

el cuerpo es el individuo el
alma es un regulo de abs al
nacer ^{en el mundo como cuerpo.} y los 12 espíritus son un
regulo de Cristo. de la luz. q

q es constituido con g pero no con x
q es constituido en
el espacio solo
x modifica su lectura
en g con la materia de
los instrumentos que la
modifican por q es
constante en el espacio
en x pero no en las demás
dimensiones. es real en el espacio
exterior es constante en

entre las
dimensiones.

(Z) (B) (∞)

exclusivas de la
una en el universo

(∞) el espíritu es
modificado por g

(B) el alma no es
casi modificada por g

(Z) el cuerpo vive
en (G)

la energía en el cuerpo
no para de crecer dada
por Dios así como

la vida que tampoco
para de crecer,

por esta la energía
es WPA | $E = WPA = 3000$

$$z = p_i - \beta$$

Siempre z el espíritu corporal.
5 - abril - 2006

z - cuerpo
 \rightarrow espíritu
 $\rightarrow +\infty$

geométrico. Aliza

$$\textcircled{B} - \text{Aliza} - 6 - | p_i \alpha \rightarrow p_i \alpha g$$

$$\textcircled{2} \rightarrow p_i \alpha \rightarrow (15/13) \times 2$$

$$\textcircled{5} \rightarrow p_i \alpha g \rightarrow 14/13 \rightarrow \begin{matrix} +\infty & 14 & 12 \\ -\infty & 12 & 12 \end{matrix} \rightarrow \begin{matrix} 13/14 & p_i \alpha g + \\ -20/100 & 2 \\ 14 & 12 \end{matrix} \rightarrow \textcircled{7}$$

$$\textcircled{10} \text{ ejemplo } | p_i c \rightarrow p_i \alpha \alpha \rightarrow p_i + \beta \text{ em}$$

$$\textcircled{12} \textcircled{4} \rightarrow p_i c \rightarrow 9/7 = 13/14 + \textcircled{2}$$

$$\textcircled{3} \rightarrow p_i \alpha \alpha \rightarrow 15/7$$

$$\textcircled{6} \rightarrow p_i + \beta \text{ em} \rightarrow 15/14 = 12/7$$

geométrico
ejemplo

$\textcircled{2}$

Como
 z cuerpo

$$\textcircled{1} \rightarrow p_i \quad 710/226$$

- cuerpo - materia - luz -

$$\beta = \frac{13}{14} = \frac{-\infty}{+\infty} = p_i \alpha g + = \frac{13}{7} = \frac{13}{7} \text{ geométrico } = 1 - \frac{2}{14} = p_i - p_i \alpha g +$$

Infinito geométrico espíritu cuerpo = p_i - cuerpo - geométrico

$z = p_i - p_i \alpha g +$
 $12 = 1 - 7$

$$\boxed{z = p_i - \beta}$$

Siempre z el espíritu corporal.

5 - abril - 2006

z - cuerpo
 \hookrightarrow espíritu
 $\hookrightarrow +\infty$

geométricos. A17a.

$$\textcircled{1} \beta - A17a - 6 - \boxed{p_i \alpha \rightarrow p_i \alpha g}$$

$$\textcircled{2} \rightarrow p_i \alpha \rightarrow (15/13) \times 2$$

$$\textcircled{5} \rightarrow p_i \alpha g \rightarrow 14/13 \rightarrow \textcircled{13/14} p_i \alpha g + \textcircled{7}$$

$$\frac{+\infty}{-\infty} \frac{14}{12} = 12$$

$$\frac{-\infty}{+\infty} \frac{2}{14} = 12$$

$$\textcircled{\infty} \text{ ejemplo. } \boxed{p_i c \rightarrow p_i \alpha \alpha \rightarrow p_i + \beta \text{ en.}}$$

geométricos
 espíritu.

$$\textcircled{12} \textcircled{4} \rightarrow p_i c \rightarrow 9/7 = 13/14 + \textcircled{8}$$

$$\textcircled{3} \rightarrow p_i \alpha \alpha \rightarrow 15/7$$

$$\textcircled{6} \rightarrow p_i + \beta \text{ en.} \rightarrow 15/14 = 12/7$$

como
 z cuerpo

$$\textcircled{1} \rightarrow p_i \quad 710/226$$

- cuerpo - materia - luz -

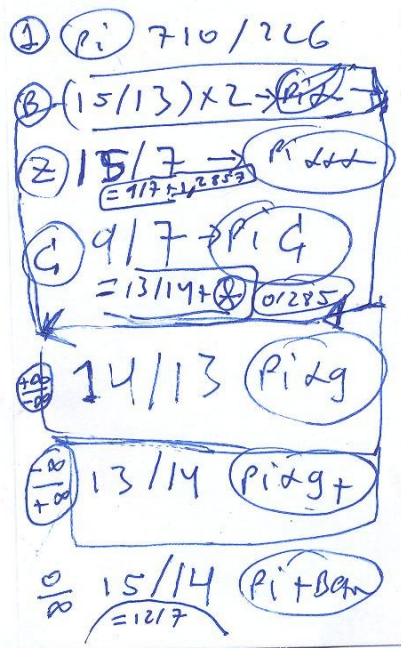
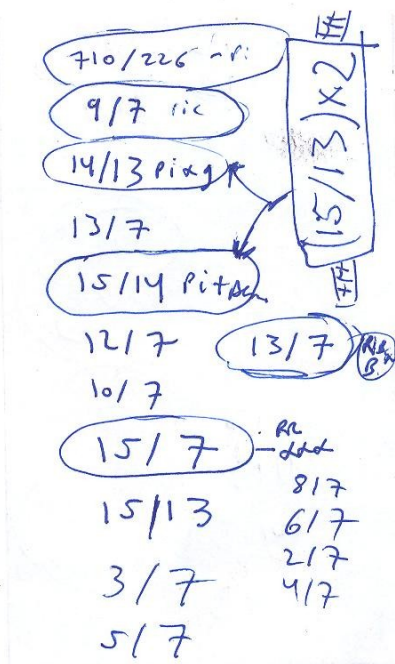
$$\beta = \frac{13}{14} = \frac{-\infty}{+\infty} = p_i \alpha g + = \frac{\sin}{\cos} = \frac{\infty}{\infty} \text{ geométrico} = 1 - \frac{2}{14} = p_i - p_i \alpha g +$$

Infinito geométrico espíritu cuerpo = p_i - cuerpo geométrico A17a.

$z = A - B \times X$
 $12 = 1 - 7$
 $12 = 6 \times X$

	1/13	
	2/13	12/13
	3/13	(13/13 = 1)
00 P1 + H → P1 + Sen.	4/13	(14/13)
	5/13	P1 + 9
	6/13	9
	7/13	(15/13)
	8/13	P1 + 10
P1C → P1 + H → P1 + Sen.	9/13	
	10/13	
	11/13	

2/7	10/7
2/7	11/7
3/7	12/7
4/7	13/7
5/7	14/7
6/7	(15/7) BB
7/7	odd
8/7	
(9/7) AC	



conclusiones pues con
las ecuaciones qe dicen
qe el exantv es el
estio del alim.

$$z = p_i - B$$

$$z = (p_i - B) \times \alpha$$

$$\infty = p_i - B$$

$$z = \infty \times \alpha$$

ecuación final
del exantv.

la última ecuación

ignora la primera.

por qe α es 2 y no 0

así qe el alimto turnay
lo no = 0 por qe

$$0 \neq \infty$$

por definición

$$\text{Binario} = 10$$

$$\text{Número} = 15$$

$$3 \times 5 = 15$$

$$+3 \times +5 = 15 = \text{Número}$$

$$15 = 10$$

Correspondencia Binario - Número

todos los números son 3×5

con lo que tenemos: que la potencia
del espíritu es el espejo de la

diferencia de nosotros mismos con
el alma

$$|z = 9 \times 2$$

$$|\text{espíritu} = 40 - 117n$$

$$| \infty = 1 - 6$$

$$|A = 5 = 9$$

1

~~$$g = \frac{\alpha \cdot m}{esp^2/m}$$~~

~~$$g = \frac{\alpha \cdot m}{(esp/m)^2}$$~~

$$\int g = \left(\frac{m \cdot \sin \alpha \times \int \alpha \cdot \alpha}{(\int esp \cdot esp)^2} \right) \times \int \zeta$$

$$g = \left(\frac{m \times \alpha}{esp^2} \right) \times \int c$$

$$g = \frac{m \times \alpha}{esp^2} \times \frac{1}{m^2} = \frac{m \times \alpha}{esp^2 \times m^2} = \frac{\alpha}{esp^2 \times m}$$

$$g_{ab} = \left(\frac{m_a \times m_b \times \alpha_a \times \alpha_b}{esp^2} \right) \times \int \zeta$$

$$\alpha = m \times g \times esp^2$$

$$esp = \sqrt{\frac{\alpha}{p}}$$

$$p = \frac{\alpha}{esp^2}$$

~~$$g = \left(\frac{\alpha}{esp^2} \right) \frac{1}{m}$$~~

$$m \times g = \frac{\alpha}{esp^2}$$

$$\alpha = \rho \cdot (c \cdot \pi)^2$$

$$\alpha = \frac{g \cdot (c \cdot \pi)^2}{m \cdot f_c}$$

$$\rho = \frac{g}{m \cdot f_c}$$

$$m \cdot g = \frac{g}{m \cdot f_c}$$

$$m = \frac{g}{m \cdot f_c \cdot g}$$

$$m = \frac{1}{m \cdot f_c}$$

$$m^2 = \frac{1}{f_c}$$

$$1 = m^2 \cdot f_c$$

$$f_c = \frac{1}{m^2}$$

3

$$(\int \alpha)^2 = \int c \times 2$$

$$(\int \alpha)^2 = \frac{1}{m^2} \times 2$$

$$m = ec^2 \cdot \int \alpha$$

$$(\int \alpha)^2 = \frac{1}{(ec^2 \cdot \int \alpha)^2} \times 2$$

~~$$\int c = \frac{1}{(ec^2 \cdot \int \alpha)^2}$$~~

5X

$$1 = \int c \cdot (ec^2 \cdot \int \alpha)^2$$

$$1 = m^2 \cdot \int c$$

$$m^2 = (ec^2 \int \alpha)^2$$

4

$$esp = \sqrt{\frac{\alpha}{m \cdot g}}$$

$$esp = \sqrt{\frac{m \alpha}{g}} \times \int C$$

$$\frac{\alpha}{m \cdot g} = \frac{m \alpha}{g} \times \int C$$

$$\alpha = m \alpha g \times \frac{m \alpha}{g} \times \int C$$

$$\alpha = m^2 \cdot \alpha \cdot \int C$$

$$(\int \alpha)^2 = \int C \times 2$$

ley derivamos
el α →

1 y 2 el α cancela.

$$g = \frac{\alpha}{esp^2 \times m}$$

ley de la
gravitación
→

$$\frac{3}{4} \neq \frac{1}{2} = \frac{3}{4 \times 2} = \frac{3}{8}$$

~~$$\frac{3 \times 2}{4 \times 2} = \frac{8}{4}$$~~

$$\frac{\alpha \times m}{\exp^2 \times m^2} \neq \frac{\alpha \times m}{\exp^2 \times m^2}$$

$$\frac{\alpha}{\exp^2 \times m} = g$$

$$\int g = \frac{\int \alpha}{\int \exp^2 \times m}$$

$$g_{ab} = \frac{\alpha_a \times \alpha_b}{\exp^2 \times m \times m_b}$$

$$\int g = \frac{\alpha \cdot \int \alpha}{(\int \exp \cdot \exp)^2 \times m \cdot \int m}$$

6.

$$\frac{\alpha}{m} = \int C$$

$$g = \frac{\alpha}{c \rho^2 \times m} \quad g = \frac{m \times \alpha}{c \rho^2} \times \int C$$

$$\frac{\alpha}{c \rho^2 \times m} = \frac{m \times \alpha}{c \rho^2} \times \int C$$

$$\alpha = m^2 \times \alpha \times \int C$$

$$1 = m^2 \times \int C$$

$$\alpha^2 = \frac{10^2 m}{3 \cdot e}$$

$$\alpha = \sqrt{\frac{10^2 m}{3 \cdot e}} \quad c^2 = \frac{m}{e \cdot \alpha}$$

$$\alpha = \sqrt{\frac{10^2 c^2}{3 \cdot \int \alpha}}$$

7.

$$g = \frac{\cancel{\lambda}}{\cancel{\lambda} \times \cancel{\mu}} = g$$

$$\frac{3e\lambda^2}{10} = ec^2 \cdot f\lambda$$

$$\lambda^2 = \frac{10ec^2 \sqrt{5c\lambda^2}}{3e}$$

$$\lambda^2 = \frac{10 \cdot e \cdot c^2 \cdot \sqrt{5c\lambda^2}}{3e}$$

$$\lambda^2 = \frac{10 \cdot \cancel{e} \cdot c^2 \cdot f\lambda}{3\cancel{e}}$$

$$\lambda = \sqrt{\frac{10c^2 f\lambda}{3}}$$

8.

$$e = \frac{10^2 m}{3 \lambda^2}$$

$$e = \frac{m}{c^2 \cdot f \lambda}$$

$$\frac{10^2 m}{3 \lambda^2} = \frac{m}{c^2 f \lambda}$$

$$c^2 = \frac{3 \lambda^2 \cdot \cancel{m}}{10^2 \cancel{m} \cdot f \lambda}$$

$$c = \sqrt{\frac{3 \lambda^2}{10^2 \cdot f \lambda}}$$

$$c = \sqrt{0.03 \frac{\lambda^2}{f \lambda}}$$

9.

$$C = 3+1$$

$$\alpha = 3+1$$

$$g = 1$$

$$m = 2$$

$$cr^2 = 1$$

$$t = 1$$

$$v = 1+1$$

12 Ecuaciones.

$$\frac{V \cdot \alpha}{4} = \sqrt{0.03 \times \frac{\alpha^2}{5\alpha}}$$

$$\boxed{V = \frac{4 \sqrt{0.03 \times \frac{\alpha^2}{5\alpha}}}{\alpha} = \frac{4C}{\alpha}}$$

10.

$$V = \frac{4 \sqrt{0.03} \times \cancel{\sqrt{J\alpha}}}{\cancel{J\alpha}}$$

$$V = 4 \frac{\sqrt{0.03}}{\sqrt{J\alpha}}$$

$$V = 4 \times \sqrt{\frac{0.03}{J\alpha}}$$

$$\frac{esp}{t} \cdot Jc = 4 \times \sqrt{\frac{0.03}{J\alpha}}$$

$$esp = \frac{t \cdot 4 \cdot \sqrt{\frac{0.03}{J\alpha}}}{Jc}$$

11.

$$t = \frac{Sc \cdot esp}{4 \times \sqrt{\frac{0.03}{s\alpha}}}$$

$$Sc = 4 \times \sqrt{\frac{0.03}{s\alpha}} \cdot t$$

$$\frac{1}{m^2} = 4 \times \sqrt{\frac{0.03}{s\alpha}} \cdot t$$

$$m^2 = \frac{1}{4 \times \sqrt{\frac{0.03}{s\alpha}} \cdot t}$$

$$m = \sqrt{\frac{1}{4 \times \sqrt{\frac{0.03}{s\alpha}} \cdot t}}$$

$$m = \sqrt{\frac{1}{4 \times \sqrt{\frac{0.03}{s\alpha}} \cdot \frac{esp}{\sqrt{V}} \cdot Sc}}$$

12

$$m = \sqrt{0,25 \cdot \sqrt{\frac{0'03}{\sqrt{x}} \cdot \frac{esp}{V} \cdot \sqrt{C}}$$

$$m = \sqrt{0'25 \cdot \sqrt{\frac{0'03}{\sqrt{x}} \cdot t}}$$

$$m = \sqrt{0'25 \cdot \sqrt{\frac{0'03}{\sqrt{\sqrt{C \times 2}}}} \cdot t}$$

$$\alpha = \sqrt{33'33 \cdot C^2}$$

$$\alpha = \sqrt{33'33} \cdot C$$

$$\Rightarrow \frac{4}{V} = 5'773502692$$

$$\alpha = 5'773502692 \cdot C$$

13.

$$\frac{y}{V} = 5'773502692$$

$$V = \frac{y}{5'773502692} = V$$

$$V = 0'692820323$$

$$C = \frac{0'692820323 \times \alpha}{y}$$

$$\alpha = \frac{C \cdot y}{0'692820323}$$

$$C = 0'173205081 \alpha$$

$$\alpha = 5'773502692896260 \cdot C$$

$$V = 0'6928203230275510$$

$$C = 0'1732050807568880 \alpha$$

15.

$$esp = \frac{0'692820323027551 \times t}{\sqrt{4}}$$

$$\sqrt{4}$$

$$esp = m^2 \cdot t \times 0'692820323027551$$

$$V = \frac{4}{\sqrt{\frac{10^2}{3}}}$$

la velocidad de la luz constante

$$es \frac{4}{\sqrt{\frac{10^2}{3}}} = \frac{4 \cdot c}{\alpha}$$

con loge.

$$c = \frac{\alpha}{\sqrt{\frac{10^2}{3}}}$$

para valor α de 4

16.

$$\frac{\lambda}{\sqrt{\frac{10^2}{3}}} = \sqrt{\frac{3\lambda^2}{10^2 \cdot \lambda}}$$

$$\frac{1}{\sqrt{\frac{10^2}{3}}} = \sqrt{\frac{3}{10^2}}$$

$e = \frac{10^2 m}{3\lambda^2}$	$m = \frac{3e\lambda^2}{10^2}$
$e = \frac{m}{c^2 \cdot \lambda}$	

$$\frac{hc}{c^2 \cdot \lambda} = \frac{10^2 h}{3\lambda^2}$$

$$c^2 = \frac{3\lambda^2}{10^2 \lambda}$$

$$c = \sqrt{\frac{3\lambda^2}{10^2 \lambda}}$$

$$\lambda = \frac{hc \cdot \sqrt{10^2/3}}{10^2}$$

$$\lambda = c \cdot \sqrt{10^2/3}$$

$$17. \frac{esp}{t} \times \int c = \frac{4c}{\alpha}$$

$$\left\{ \begin{array}{l} t = \frac{\int c \cdot esp \cdot \alpha}{4c} = \frac{esp \cdot \alpha}{4 \cdot c \cdot m^2} \\ \alpha = \frac{t \cdot 4c}{\int c \cdot esp} = \frac{t \cdot 4 \cdot c \cdot m^2}{esp} \\ esp = \frac{t \cdot 4 \cdot c}{\int c \cdot \alpha} = \frac{t \cdot 4 \cdot c \cdot m^2}{\alpha} \end{array} \right.$$

$$\frac{t \cdot 4 \cdot c}{esp} = \sqrt{\frac{10^2}{3 \cdot e}}$$

$$t = \frac{\sqrt{\frac{10^2}{3 \cdot e}} \cdot esp}{4c}$$

$$\alpha = \frac{\sqrt{\frac{10^2}{3 \cdot e}}}{\int c}$$

$$\int c \cdot \alpha = \sqrt{\frac{10^2}{3 \cdot e}}$$

$$\int c = \frac{\sqrt{\frac{10^2}{3 \cdot e}}}{\alpha}$$

18.

$$\frac{t \cdot u \cdot m^2}{\epsilon \rho} = \sqrt{\frac{10^2}{3}}$$

$$t = \frac{\sqrt{\frac{10^2}{3}} \cdot \epsilon \rho}{u \cdot m^2}$$

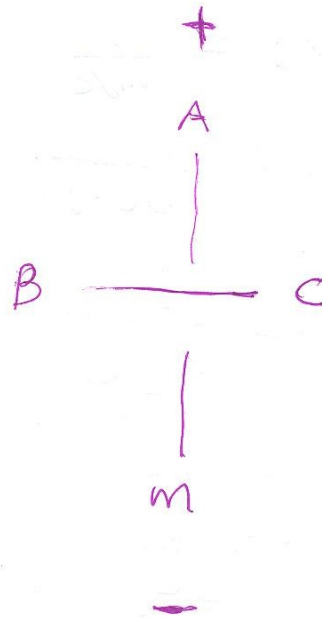
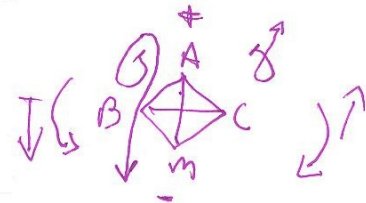
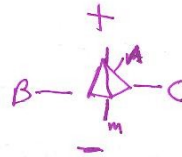
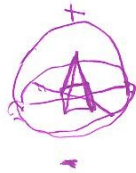
$$\epsilon \rho = \frac{t \cdot u \cdot m^2}{\sqrt{\frac{10^2}{3}}}$$

$$m^2 = \frac{\sqrt{\frac{10^2}{3}} \cdot \epsilon \rho}{u \cdot t}$$

energía	epsilon	masa	c
> E	< ϵ	> m	< c
< E	> ϵ	< m	> c

a mayor energía menor epsilon y mayor masa y menor c
a menor energía mayor epsilon y menor masa y mayor c es decir en el centro del universo la luz está quieta y epsilon es cero o casi

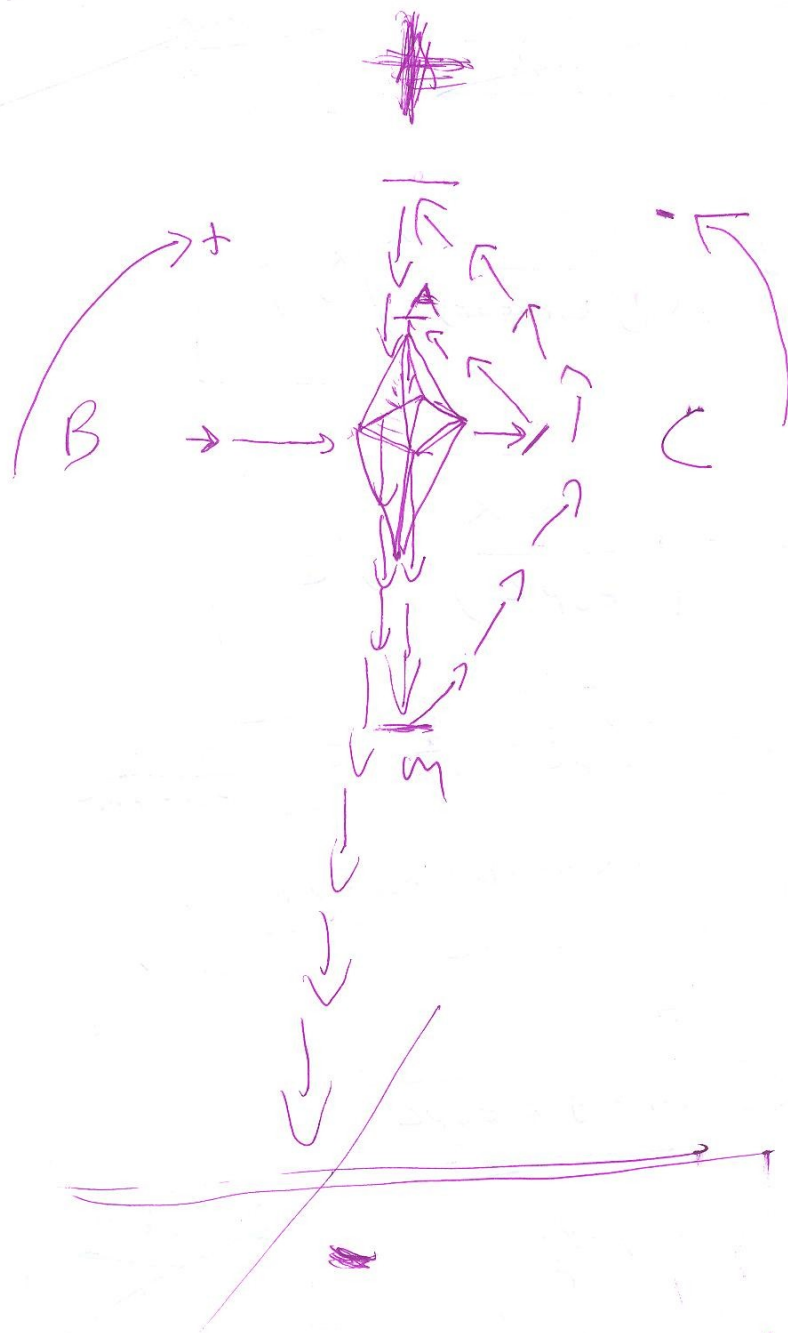
A



G

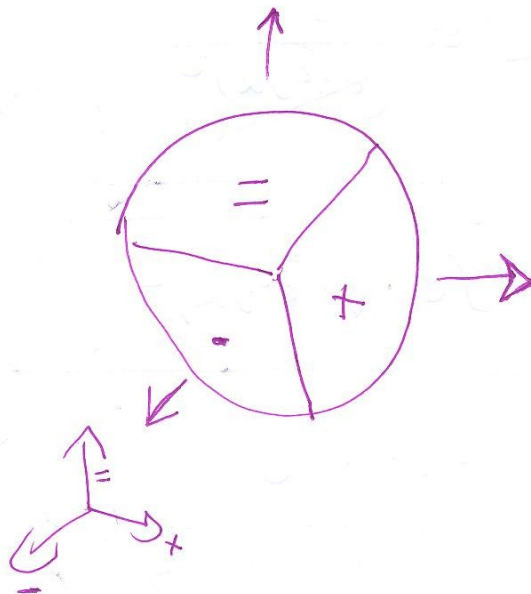
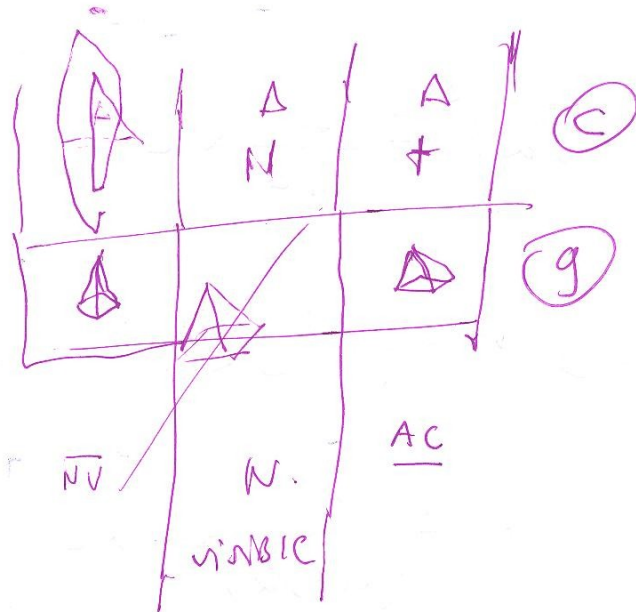
B.

④



la luz es materia y la materia
es luz.

3



EL TIEMPO SE PUEDE ACCELERAR Y PARAR.

17.

10 Ecuaciones generadas del universo.

$$\int C = \frac{I}{m^2}$$

$$C = \sqrt{0'03 \cdot \frac{\alpha^2}{\int \alpha}}$$

$$(\int \alpha)^2 = \int C \times 2 \quad \alpha = \frac{4C}{V}$$

$$g = \frac{\alpha}{esp^2 \times m}$$

$$\alpha = \sqrt{\frac{10^2 \cdot m}{3e}}$$

$$I = m^2 \cdot \int C$$

$$10^2 m = 3 \alpha^2 e$$

$$m = ec^2 \cdot \int \alpha$$

$$esp^2 = \frac{\alpha}{m \cdot g}$$

$$V = \frac{esp}{t} \times \int C$$

$$t = \frac{esp}{V} \cdot \int C$$

$$m = \frac{3e\alpha^2}{10^2}$$

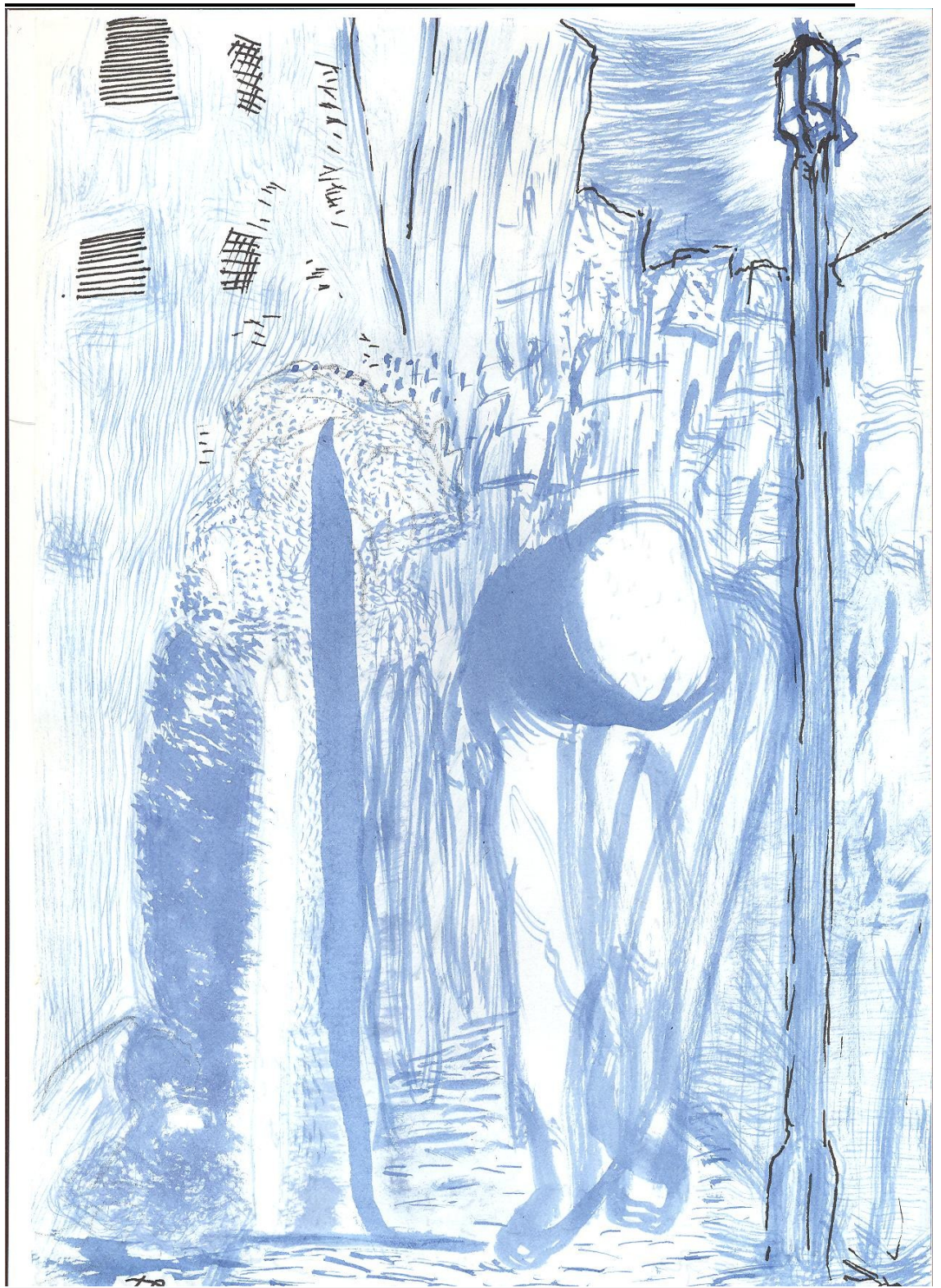
$$V \cdot \alpha = 4C$$

~~scribble~~

$$\alpha = \sqrt{\frac{10^2 c^2}{3}}$$

$$C = \frac{esp}{t} \int C \cdot \alpha$$

$$C = \frac{V \cdot \alpha}{4}$$



Here, children, I transcribe the text but not the formulas and numbers that are easier to read:

“Time passes differently in each of the dimensions, so there are 7 different times, one in each dimension:
Times of EPSILON, C, G, PI, BETTA, B and Z”

Epsilon (space time) or the curvature of space is the time at a given point, EPSILON is defined as the escape velocity, theoretically it is the distance from the center of the universe, in space but it can be modified it can be considered as the centrifugal force. It is 90 degrees from V or the speed.

Epsilon is defined as the curvature of the universe in space or escape velocity which is proportional to the distance from the center of the universe: it is $4C$ divided by V . It is modified by the absolute velocity and C and is proportional to 4 times C and inversely proportional to absolute V , it is modified at each point with respect to the center of the universe.

EPSILON integral is proportional to the diffraction of light in space.
EPSILON integral is equal to diffraction.

And the diffraction is equal to the real diffraction by EPSILON integral. With this we conclude that the universe is stable and has no temporal or spatial limits. It is eternal, it is immensity and it has time and space and matter has a quasi-infinite calculable quantum number always growing in energy and matter.

The energy of the universe is a quasi-infinite, calculable quantum number that is always growing in energy.

Space has no limit and time has no beginning or end, so to be or not to be, wave or particle, which was previously the chicken or the egg.

Birds are descended from the dinosaurs and all oviparous.

C (LIGHT) is more constant in the universe but EPSILON can be modified.

C tends to be constant throughout EPSILON but is modified somewhat with the curvature of EPSILON.

(Note: & EPSILON or position of the object V absolute velocity, C LIGHT external velocity, M mass, T time, E energy, ESP space)

The decimal numeric alphabet only has 11 numbers. From 0 to 9 and the number 11 would be infinite.

The human order decimal binary in which the difference between them is the unit less in the last of them in which the difference of 11 less plus infinity is equal to neutral infinity, in which adding the difference of the 2 tables gives us the current human decimal. That is, the table
1/2/3/4/5/6/7/8/9/10/infinity that we know as binary decimal, in which the concept of zero appears in the number 10 and appears as neutral zero in 10 and

It only knows neutral infinity, it does not know plus zero and minus zero, and minus infinity and plus infinity. It only knows neutral infinity and neutral zero, that is, plus minus infinity and plus minus zero, which is the same thing.

This decimal defines that only neutral infinity is equal to 11.

The decimal scale that is known and used is the following, that of G. With which there are 3 decimal scales: that of G, that of man or matter, that of EPSILON, that of time and that of C, that of light or Euclidean geometry.

Epsilon controls time, C controls light, and G controls matter; assuming that G controls space-time, G contains EPSILON and C.

The gaseous state is influenced by & EPSILON, the solid state by C Light Christ, the liquid state by G God matter.

Light C behaves in each state in 2 possible ways in constant EPSILON, in C it can stop and accelerate without problems and without limit, in G it takes two maximum and minimum values and its relation with G generates the colors that are the quantum of the matter reflected at the same speed of C of input equal to the color.

(Note: the 7 dimensions are: G God matter gravity, B soul, Z ZETTA body and spirit, C light space time, PI, BETTA and & EPSILON).

PI sees all decimal binary numbers as negative.

By definition, the two coordinates of the dimensions in PI are equal in sign and dimension, by definition of the circle and the unit.

By extension, in PI geometry, all numbers divisible by multiples of 7 are of one class and those divided by multiples of 13 are of another class, an inverse that satisfies that one minus class A is equal to class B, mirror law; that is, PI minus X is equal to Y, where X and Y are multiples related to 7 and 13.

Any infinite number defines a circle by definition of this geometry.

Light C in matter G is accelerated by definition and only light that is not accelerated when entering the matter is reflected or rejected, so crystals by definition accelerate light to C. Mirrors reflect C at the same resulting speed. The reflected light has the same value of resulting C as when entering Ca equal to Cb.

The geometries are: infinite parallel of & EPSILON, convex of G, Euclidean parallels of C, central parallel of PI, concave of BETTA.

Temperature is undoubtedly defined as the speed of G in a given static space, that is, the speed of matter G or God. So if this is relative, we can conclude that the average temperature at the center of the sun is 21 degrees Celsius. Because & EPSILON varies and C varies and there is water and water sources.

And it can be concluded that the state of the center of the earth is indeterminate, it can be the 3 states together at the same time: solid plus liquid plus gaseous. C plus G plus EPSILON gives another unknown state C+G+&.

BETTA geometry defines two equations: plus one equals plus infinity and minus one equals minus infinity.

Man acts as God before his children and woman acts as universe before her children, that is, father – G – God matter and mother – C – universe Light.

The son is a disciple and created by his father and his mother, that is to say by his God matter and his universe Light Christ.

So G is masculine and positive and C is feminine and negative and God his wife is the universe in which he creates his positivity turning C into masculine and positive because he defines it that way C is masculine and positive and we see it feminine and negative just as we see G as minus five and it is actually plus five equals plus minus three.

Neutral zero is decimal zero.

Infinite parallel geometry has 5 numbers (plus zero, minus zero, neutral or decimal zero, plus infinity and minus infinity) which are two (they would add up to plus two without a sign plus six) multiplied by Euclidean EPSILON gives the binary decimal. 10 numbers from 0 to 9, actually 11 numbers, eleven equal to zero.

The geometry of infinite parallel EPSILON defines that Z ZETTA is equal to the body equal to eleven....

EPSILON space time is defined by eleven times twenty-eight equals 308, and is defined by twelve times twenty-four equals 288..... This geometry defines an equation: eleven equals neutral zero.

Epsilon defines the decimal by nature, since C contains G in & EPSILON, C is the solid and G the liquid.

C is the square or the line or the cross and G is the circle or the point or the circumference, that is defined by EPSILON & . It only counts the binary 4-5-9-10-11 and says that $11 = 4+5+9+10 = 28$ so $11=28$.

The colors we see in C are defined by the 6 crystals of the soul, of each individual. It is the relationship of C in B that comes out in Z and Infinite the spirit dominates in G the flavors of food, with which we conclude that the flavors of food are influenced by the spirit like all the tastes of the soul and of the being, then B the soul defines the colors we see in the Light and Infinite the spirit defines the tastes of B, that is to say the tastes about matter, be it food or sensations that the possession of this produces in us, in food or property or rent or free. / - The home is our god G because our laws prevail and the outside of the home is the light of Christ C in which the laws of all prevail. In this geometry only BETTA, G, C ++ and (C ++ + PI) count in which their sum gives Z the body ... with which we have that by the parity of this geometry $PI \times C = G ++ \times C ++$

C in matter G is influenced and inverts the maximum and minimum values of the macrocosm and inside it can take a minimum value of 0.1250503018168 etc... And a maximum value of 2.54. The maximums are inverted are minimums and the minimums are maximums why? mysteries of mysteries, this happens in matter, with C inside it that is why we see colors if not we would not see them. Which gives us a constant value of C in EPSILON given by $C=0.3928574$ divided by $PI+$ +.....

It gives us a unique and constant value of C in epsilon of 0.3928574 divided by $PI+$ +.

& EPSILON is the one that dominates the gaseous state and outer space. We conclude that the speed of C in space without matter is constant and its measurement is infinite and has no defined number because it is divided by $PI++ =$ number PI with which its exact measurement is not known, it is always more defined than the number we want to get.

The approach to God is measured by the degree of happiness that the Being feels in all its points, it is the sum of all of them, and the approach to the Light or Christ is measured by the multiplication of all those points that define happiness.

Theoretically, these points can be reduced to the 7 that dominate the 7 chakras, each related to a dimension. In other words, all the forces of these points are reduced to the sum of 7 forces – or chakras.

& EPSILON relates the decimal to all possible numbers.

The binary of PI by extension is all prime numbers that by extension are infinite. The decimal binary corresponds to the prime binary. The binary scale is infinite and defined and the PI scale is also infinite and greater in proportion and indefinite.

G is defined by 9 formulas.....

The diffraction of Light in (speed) space is equal to the diffraction of Light in matter times plus or minus integral of & EPSILON.

Being & EPSILON positive or negative depending on whether the object has a lower or higher absolute speed than ours that we measure.

Assuming that C is equal in all cases... plus or minus being a parity value that the integral takes, but always multiplies the difference whether negative or positive.

The universe can be defined with three geometries: convex Euclidean and concave . They are all true and possible like that of wave or particle, in fact the closest line between several points has three possible solutions, all true.

& EPSILON can be defined as the curvature of the universe at a certain point or its gravitational attraction towards the center of the universe or towards God.

& EPSILON varies in space and C tends to a constant value in space time, but matter can stop or modify it, while EPSILON depends on the space time C...

The universe is two-dimensional with only 2 dimensions of space & time. If we do not count God or the third dimension which is matter defined by the formulas of mass.

Space and time are infinite. Only matter and energy are finite, which is constantly increasing with finite gravity and acceleration.

Everything in the universe since God created it, any energy or particle has the 7 intrinsic dimensions, with which energy has Z and B and Infinity: also body, soul and spirit.

.....

We have 2 & EPSILON space-times, 2.14 PI, 4 BETTA, 2 C light and 8 G - God matter, 20 Z bodies equal to 12 Z++ infinite spirits, 7 bodies, and a soul divided into 6.

The geometry of the universe at its center is anti-Euclidean, that is, 2 parallel lines never converge at infinity but are seen as parallel and only 2 angular lines that separate are seen as Euclidean, they are seen as parallel...

The universe in its middle has 3 geometries and at its ends and edges only 2 geometries, and at its end only one geometry in its center it has 4 geometries, Euclidean, concave, convex, central parallel. The Euclidean is seen as concave, that is to say two parallel lines are seen that separate at infinity, and the central two concave lines that separate, are seen parallel to infinity, in the same way the convex and the concave are seen.

With space the same thing happens with dimensions, that is to say in the center it has 4 dimensions, in the middle 3 dimensions, and the fourth is hidden, and at the edge 2 dimensions, the remaining 2 hidden, so in the center it is eternal and without limits it grows and at the edges it is finite but it has no dimension, nor limit because it curves; there are 7 universes together, with their different dimensions coexisting together as there are 7 notes, we have 7 bodies and 7 degrees of evolution, in the center space is infinite and has no measure, at its edges it is finite and with measure but it curves, in the center it is Euclidean and central and on the edge it is concave and convex only on the outside of the edge, & EPSILON is a measure like that of the centrifugal force at 90 degrees from the direction of absolute movement, it is a measure of space.

C is a measure of time.

YG is a measure of mass, and relates in an average universe ours with three dimensions in space time & CG.

The position of & C and G gives the measure of the geometry that is obtained in space time, theoretically they tend to be at 90 degrees each, but they can move and modify those forces, both in size and position. And the positions in space time can also be exchanged and & C and G can change their position for each other but not their intrinsic force.

The space in the center of the universe has 4 dimensions as in the nucleus of the particles in its middle edge has 3 dimensions as in the layer and edge of the nucleus or the middle universe and on the outside, of the universe only 2 dimensions and in reality in the end only 1 dimension, bipolar which is the outermost layer of electrons or the outer layer of space.

Time has many dimensions C Light contains a new dimension in itself that encompasses all time and understands that it has no beginning or end or measure or extension, it is eternal = Light = Christ and exists because it does, like matter. Temporal universe = Christ + God. Matter = God.

Space universe = Light + matter. EPSILON squared is equal to plus G squared minus C squared.

Space equals Epsilon squared plus G squared plus C squared. This is the ultimate formula for the energy of a point in space-time, so EPSILON squared plus G squared equals mass times integral of EPSILON. Energy equals mass times C squared times integral of EPSILON.....

Time has many dimensions like matter and space.

& EPSILON is quantifiable and measurable.

.....

Central parallel geometry is positive and is the same as concave geometry which is negative due to parity.

And the Euclidean parallel that is positive is equal to the convex by parity, which is negative and by parity the concave is equal to the convex because both are negative.

Possible geometries: positive central parallel PI, & zero infinite parallel EPSILON, positive Euclidean parallel C, negative concave BETTA and we intuit negative convex G....

We only see 2 convex Euclidean parallels but there are 5 in total and in reality 3.

We only see one of G and one of C.

G convex; C Euclidean; & EPSILON we do not see them infinitely parallel. There are 2 more dimensions of space time, the central parallel and the concave, PI and BETTA we do not perceive or see them but they exist and in the center of the universe PI and BETTA are seen and observed as well as in the center of the nucleus of the particles at the Micro Quark level.

All 5 dimensions exist at every point in the - G - C - & - of space at all its points, that is why God only counts up to 5 to know the entire universe and we have to count up to 10 to know the same.

5 God = 10 man. Those 5 dimensions of space time in reality are transformed into 10 by parity. Parity = $\times 2$. $5 \times 2 = 10$. God \times reality = man. & Epsilon squared equals G squared plus C squared would be a universe with time in the opposite direction or a space time in the opposite direction of ours which is & EPSILON squared equals G squared minus C squared. It is the definition of time because it has parity 2 possibilities $\times 2$ being positive or negative the sum of space time... they would give an inverse time and a reverse time.

Time has no beginning or end because C exists as a dimension, and C is constant throughout the universe through & EPSILON.

C squared equals G squared minus & EPSILON squared. Space also has parity and C squared equals G squared plus & EPSILON squared and is measured with plus minus & EPSILON squared in the sum; that is, there is an even space, opposite like that of the mirror that reflects the light, there is C squared equals G squared plus & Epsilon squared. It would be the space of the mirrors that we see in C in the metal but we cannot enter into it because we are missing dimensions of C which has many and is constant throughout the universe and in the 7 universes.

7 is the number of God, 9 is the number of Christ and 2 is the number of man. In reality we only see 2 dimensions G and C. We need to see & EPSILON the dimension of space time for there to be 3 dimensions.....

Energy equals Z times B times infinity.

Life equals energy times & EPSILON equals Z times B times infinity times & EPSILON.

Definition of the space-time universe: & EPSILON equals Z squared plus B squared plus infinity squared.

This treatise only defines the 7 dimensions of the body, of the 7 bodies, the following ones of the soul and the spirit would need many more dimensions and definitions.

The possible geometries are $3+1=4$. There are 2 positive, and 1 negative, and 1 zero. Positive central parallel, positive Euclidean parallel and zero infinite parallel, concave and convex negative and God has defined that there are 2 positive 1 zero meutra and 1 negative. 2 positive plus 1 zero plus 1 negative equals 4 which is equal to plus zero by parity $5 + \text{man} = 2 = 7$ the number of the universe. Man considers that by the law of parity we can also consider that there is only one positive with which 1 positive plus 1 zero plus 1 negative = 3 that if we add the formula to the values are $1+0+1=2$. The 2 dimensions that we see G and - C. And the three dimensions of space time that we observe. -

C is constant in the universe, what is not constant is & EPSILON in matter and even though C appears constant, it can accelerate or stop without any problem.

However & EPSILON is constant at every point in space time in G in matter. And yet C can have many values in G, in matter although in space it is constant, which means that the matter instruments that we use to measure C, in G are influenced by & EPSILON and yet C is defined by & EPSILON in space as a constant, the case is how and where we measure C with what G matter we measure it, measure, well C has 7 dimensions, or possible geometries, G has 5 dimensions or possible geometries. and & EPSILON has 2 dimensions or possible geometries, actually two raised to two which is $2 \times 2 = 4$ by parity.

We only see in & EPSILON two dimensions towards the inside of the universe and towards the outside of our dimension G and space-time position, but by parity they are raised to the power not $2 + 2$ but 2×2 , which is different although equal: $2+2=4$, $2 \times 2=4$. First law of parity, which in reality is by parity $2+1=3+2$.
 $\&+PI=3$

.....
 6 and 8 are not defined, they are B +6
 and Z -8

.....
 Zero is not defined except as $-G+G=0$
 Being & EPSILON a unit without positive only without parity – equal to 0 is defined as $0=2$. Positive Betta, BETA++ is equal to 0 defined as plus minus four = $+4-4=+-0$

- PI Negative PI is not known but exists
 Negative G equals -5 . Positive G equals +3.....
 $\& + G- = G+ . C+= c + \& .$ We have then two important equations of the universe $G=\&+G . C = C + \&$ with which $G=\&=C . -5=2=7$

.....
 PI is equal to number PI, it only has 2 positive numbers, 1 and PI in its positive parity, its negative parity is not known but it exists.

.....
etc

With what we have with C and G we arrive at 10 numbers and in our decimal computation they would be

When reaching positive $G+$, G goes from negative -5 to +5 due to the polarity that $G+$ defines G as +5 , however EPSILON & defines G as -5 as negative $C+$ $G+=G=+-5$ due to parity.

However C defines G as +5.

We need 10 dimensions to explain the entire universe: & EPSILON space time – PI paradise unit – BETTA eternity – C Light Christ – G mass God.....

With these equations we conclude that.....

We need to equal PI BETTA $C+$ where C and $C++$ are constant $C = C . C+= C+$ in the almost quasi-universe?

Since PI is constant in the universe, PI and $PI+$ are +1 and the number PI is constant. We only have to equal BETTA with a value of -4 and in binary 3 has no equivalence other than BETTA + BETTA = BETTA++ = & since $C+ G+=G=+-5$

.....

The universe has 7 dimensions and we have 5. They have 2 possible geometries. Explosive and Impulsive. From a point to the entire circumference. Explosive and Impulsive from all the circumferences to a point are the same geometry with the polarity if we call them B and Z. B divided by Z equals & and Z divided by B equals &.

The values of explosive B and impulsive Z are concatenated with 0 with $\&+=+0$ and $BETTA++ = -0$. where $B = +6$ and $Z = -8$, so that

The concept of zero does not exist but is replaced by parity as + infinity or - infinity..... The geometries Z and B exist like all the others and there are 7 in total: Z - B - G - C - PI - & - BETTA, with 7 dimensions, the dimensions B and Z connect the 7 universes to each other.

B and Z do not exist as dimensions per se, G is not affected by them, properly so God only counts up to 5 - to know all the dimensions and his universe has 7. To quantify them we would have to do $7 \times \& = 14 = 0$. 14 dimensions for space time..... With these 14 dimensions the entire universe of universes would be explained. B and Z represent infinity in all its concepts and in principle by the law of parity they are the same $B = Z$. It is the first definition of them..... The values of B are always equal to Z but with opposite parity.

Dimensions B and Z do not belong to the universe but only to God. They exist but we will never see them. Only in the center of the universe in God do they exist even the matter G has them. But we cannot touch them or see them only intuit them.

The center of the universe can be defined in the nucleus of all the bound particles. That is to say, the nucleus of a particle in the microcosm is defined by $Z - 0$ and the center of the universe is defined by $B + 0 + \text{infinity}$. One dominates the macrocosm $B + 0$ and the other the microcosm $Z - 0 - \text{infinity}$.

They have no extension, their number is 0 or infinity.

- 0 corresponds to -0 or - infinity or Z -8 (microcosm).

+ 0 corresponds to +0 or + infinity or B +6 (macrocosm).

$Z = -8$. $B = +6$. $Z++ = -\text{infinity}$. $B++ = +\text{infinity}$. $BETTA \times \& =$

- Z

$G \times \& = +-B$

And by the law of parity in $G - \text{infinity} = +\text{infinity}$. So $Z++ = B++$. Or better said $+Z++ = -B++$.

Which reduces B and Z to 3 dimensions to measure in G: B, Z, and infinity.

Then they would be in 13 dimensions, to measure the scale to God, like the 13 notes of a chord, from C to B.

Being $Z++ = B++ = \text{infinity}$. The definition of God. $0 - \text{infinity} = +\text{infinity} = \text{infinity}$.

Which is the same as saying $+0 = -0 = 0$

That is to say, infinity takes a value of 2 in microcosm and 14 in macrocosm.

When we reach the number 14 we reach infinity in the macrocosm, and 2 in the microcosm.....

$14 = \& = 2 = 0$ or 1 binary, only 2 possibilities.

So $Z++$ and $B++ = \& \text{EPSILON} = \text{infinity}$.

The binary 13 and 14 would be reduced to 13 as a value $12 \cdot 14-2 \cdot 14-13$.

Which would leave 13 numbers: 13 corresponds to infinity which corresponds to 12.

The number fourteen 14 can only have a value of 0 or 1, it is the parity of everything.

.....

The decimal binary number 14 defines parity.

$B + Z++(\text{infinity}) = PI+$

.....

B or soul is impregnated by God at birth, the body is ours and the spirit is everyone's, infinite = spirit.

C – Light – Christ – time of the universe.

G – mass – God – matter.

& – space – space time . man . Distance from the center of the universe or centrifugal speed of it.

PI – paradise – circle – the house of God – center of the universe. BETTA – eternity – God's time.

$\& = Z \text{ squared} + B \text{ squared} + \text{infinity squared}$. : Definition of the universe.

All dimensions can be reduced to C or 7 , and the body Z is reduced to 7 bodies , that is to C ,

The universe is reduced to 7 universes, that is, to C, and everything is reduced to 7, to C, which is constant throughout the universe in space, but not in matter, nor in the body, nor in the spirit, nor in the soul.

So we have 7 bodies, with 7 chakras, 6 souls and 12 spirits. The body belongs to the individual, the soul is a gift from God at birth in the universe as energy and the 12 spirits are a gift from Christ. of the Light. C.

C is modified by G but not by &.

C is constant in space only & modifies its reading in G with the material of the instruments that measure it, because it is constant in space in & but not in the other dimensions. That is, in outer space it is constant only.

The dimensions Z, B, and infinity are exclusive to life in the universe.

Infinite spirit is modified by G.

B the soul is almost unchanged by G. Z

the body lives in G.

The energy in the universe does not stop growing, given by God, just like life, which also does not stop growing, because energy is life.

Energy = life = ZB infinite.

.....

We conclude then with two equations that say that the spirit is the mirror of the soul: ZETA is EQUAL TO (PI minus BETTA) times epsilon and infinity is equal to PI minus BETTA. The final equation of the spirit is that ZETTA is equal to infinity times epsilon. The last equation invalidates the first because EPSILON is 2 and n 0 although it is also defined as equal to 0 because by definition 0 is not infinite.

All numbers are 3 times 5.

So we have that the geometry of the spirit is the mirror of the difference between ourselves and the soul: ZETTA is equal to G by EPSILON.

Spirit equals self minus soul, infinity equals 1 minus 6. Infinity equals 5 equals G (G being gravity).

Z being the corporal spirit

Infinity, geometry spirit body = PI minus body, geometry soul. We conclude then with two equations that say that the spirit is the mirror of the soul.

$$Z = (PI - B) \times \&$$

$$\text{Infinity} = PI - B$$

Z = infinity x & EPSILON: final equation of the spirit.

The last equation invalidates the first because & is 2 and not 0. Although it is also defined as = 0 because 0 is different from infinity by definition

All numbers are 3 x 5.

So we have that the geometry of the spirit is the mirror of the difference between ourselves and the soul.

$$Z = G \times \&$$

$$\text{Spirit} = I - \text{Soul} .$$

$$\text{Infinity} = 1 - 6 .$$

$$\text{Infinity} = 5 = G$$

End of transcription.

Here, my children, I finish the transcription of almost the entire text (since your mother's handwriting is a bit complicated), but note that I have not transcribed almost any formula or equation or any numerical table (which are easy to read in the text and have a lot of mystery as they are written).

You will have to notice, children, that with all these formulas and equations, by substituting values, you can make many more, which explain many things. Likewise, understand that from what has been said it can be inferred that everything in the universe is alive, even matter and energy, and that not only electrons, but even photons have body, soul and spirit.

I understand something about physics, neutrinos and cosmic rays, but I still don't know what an electron is, and I can't even imagine what a single photon is. It must be something fantastic. Consider that a neutrino has 10 times the energy of an electron and there are three types of neutral charges, and cosmic rays have about a thousand times the energy of a neutrino. Also, consider that there are not 2 but 3 possibilities in matter: wave, particle and energy.

Likewise it is inferred that in the observation of light in the universe, it seems by optical effect of & EPSILON that the universe expands faster the further away that light is in another EPSILON &; it does not stop being an optical effect that must be corrected! It is undoubted that the universe is growing and expanding like a plant that grows in the buds branches come out like galaxies of energy and matter, new space time emerges in its interior and without a doubt it grows and expands eternally, it has been like that and it will be forever.

The ancient Greeks already spoke of & EPSILON and called it ether.

A pyramid has 6 planes, no matter how small its tip is, and 8 sides, which suggests that it is the 6 and the 8, and they add up to 14 and it is the 5 God, and each side is the 3 by 4 faces, 12 which is again the 3 also God.

So think my children that all drugs and foods accelerate the chakras of the body, such as heroin, opium and morphine accelerate the first and second, alcohol accelerates the third, hashish and marijuana and their derivatives the fourth, cocaine the fifth, mescaline the sixth, and lysergic acid the seventh chakra, think also that sugar and chocolate all accelerate a little in turn and that milk is very good for the seventh chakra, in the same way think my son that oxygen, which is also a drug and a food, moves all the chakras and life, also see, that whoever consumes nitrogen for his flesh is an antichrist and has a very black aura from the nape of the neck to the coccyx and that his aura instead of giving off light is consumed by the evil ones who are these people whose flesh does not consume oxygen or quasi... look what will happen to them.

You will also notice that Gnome told me that the evil ones will be expelled from the earth and will be taken to live outside on a speck of dust. In an electron of that speck of dust they will have their home and that will be their new planet, so that they can evolve; God never kills. And we will laugh eternally. Hatred produces radioactivity in the heart of man.

Likewise, note that time does not run the same way outside the universe or in the center or in the middle: a second in paradise is already eternity for us. Time is something that we still do not know or understand, even though we already know how to divide it up to measure it in &. Have you stopped to think what a second is? My God, I still don't understand it...

So my children, study some of these formulas and discern, since the only formula that has not changed is that of weight. Galileo was right because...

So, my son Luis and my children, this entire letter addressed to you, which has become a bit long, was to declare a couple of truths to you that, out of zeal for the truth, I have decided at the end of this story that your parents will clarify for you when you turn 18.

Forgive me for not explaining at the end of this letter this truth that has cost me so much to tell you; but out of respect for all of you, you should know that I have never lied to you, but rather I have hidden the truth from you; you have simply not been told the whole truth, but the day that you understand it and your father takes you to the LIGHT, you will understand and you will be very happy. Thus, my dear eldest son Juan, you will take your younger brothers by the hand; I adore you all.

Someday we will be an ant, and another day we will be a salamander. Someday I will be a mare. If I don't know what a photon is, what will I know about LIGHT?

I told my wife, handing her a printed copy of everything: - Pearl of my LOVE, I dedicate the book to you, my dear wife. -

In Madrid on Monday, June 25, 2007.

An eternal kiss and hug from your father Juan and your mother Maria.

END .



